

Heavy Duty SB36 Salamander Broiler

Standard Features:

- S/S Front, 2 sides, top & bottom with remaining exterior black.
- Infrared Rapid Start burner rated @ 32,000 BTU's/Hr. — SB36 Full-flow burner operation. On/Off.
- Adjustable grid heights.
- Broiling area is 13-1/8"D x 26-3/4"W (33.3 cm x 67.9 cm)
- 1/2" (1.3 cm) NPT gas connection at top right rear.
- 1/2" (1.3 cm) NPT gas pressure regulator provided.



SB36-W

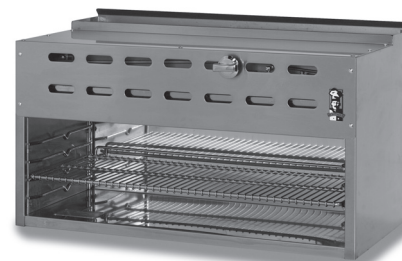
Model #	Description	BTU's/Hr	Ship Wt. (lbs.)	Standard Finish	S/S Back	Interconnect
Salamander Broilers						
SB36-HB	w/ High Back for mounting on 136, V136 & 36	32,000	240	\$6,004	\$584	\$726
SB36-C	Counter model	32,000	177	\$5,638	\$308	N/A
SB36-W	w/ Wall mounting brackets	32,000	185	\$6,026	\$308	N/A

Heavy Duty Gas Cheesemelter

24"W, 36"W, 48"W, 60"W or 72"W x 18"D
(60, 91.4, 121.9, 152.4 or 182.9 cm wide x 46 cm deep)

Standard Features:

- S/S Front, 2 sides, top & bottom with remaining exterior black.
- Rapid Start Infrared burner(s) rated @ 20,000 & 32,000 BTU/hr.
- One rack, bright nickel finish, 3-positions.
- 3/4" (1.9 cm) gas pressure regulator provided.
- 3/4" (1.9 cm) NPT gas connection located:
-2-5/8" (6.7 cm) from right side, CM24 & CM36.
-Centered, CM48 & CM72.
-23-3/4" (60.3 cm) from right side, CM60.



CM36
(Shown with optional 4" legs.)

Model #	Description	BTU's/Hr	Ship Wt. (lbs.)	Standard Finish	S/S Back	Wall Mtg Brackets
Cheesemelters						
CM24	for counter or wall mount*	20,000	130	\$3,930	\$ 272	\$246
CM36	for counter or wall mount*	32,000	164	\$5,056	\$ 308	\$362
CM48	for counter or wall mount*	40,000	256	\$6,028	\$ 412	\$458
CM60	for counter or wall mount*	52,000	300	\$7,116	\$ 514	\$556
CM72	for counter or wall mount*	64,000	347	\$8,144	\$ 596	\$666
CM24-HB	w/ High Back for mounting** on 136, V136 & 36 Ranges	20,000	154	\$4,962	\$ 520	N/A
CM36-HB	w/ High Back for mounting** on 136, V136 & 36 Ranges	32,000	200	\$5,758	\$ 584	N/A
CM48-HB	w/ High Back for mounting** on 136, V136 & 36 Ranges	40,000	304	\$7,242	\$ 762	N/A
CM60-HB	w/ High Back for mounting** on 136, V136 & 36 Ranges	52,000	360	\$8,556	\$ 974	N/A
CM72-HB	w/ High Back for mounting** on 136, V136 & 36 Ranges	64,000	419	\$9,604	\$1,128	N/A

*For use on noncombustible wall only. **Interconnect to range \$726. Pass-thru cheesemelters — Consult factory

Cheesemelter Options & Accessories						
Legs, 4" (10.2 cm)				S/S — Set of 4...(CM24, CM36 & CM48)		\$188
				S/S — Set of 6...(CM60 & CM72)		\$282